

HOFMANN® 

geodyna[®] 7800P



ENGINEERING UNLEASHED™

geodyna® 7800P

WHEEL BALANCER WITH TOUCHSCREEN MONITOR

The geodyna® 7800p from Hofmann® is specifically engineered to meet the demands of high-volume shops seeking a rapid and user-friendly wheel balancing machine. With its automatic operation and intelligent features, there is no need for manual data entry, as the machine detects the number of spokes and automatically selects the appropriate balancing mode. Technicians are guided effortlessly through each step of the balancing process with the aid of an easy-to-read 19-inch touchscreen monitor ergonomically positioned above the wheel guard. The easyWeight™ function employs laser-guided accuracy for optimal placement of weights. Through a simple screen interaction, the Split Weight Mode enables precise balancing of alloy rims while concealing weights behind the spokes, preserving the wheel's aesthetic appeal. The patented automatic Power Clamp™ uses electromechanical technology to securely clamp the wheel, so measurements are consistently accurate without constant weight adjustments. For precise and efficient wheel balancing, the geodyna® 7800p is the ultimate choice.



RIM LIGHTING

Equipped with a powerful LED lighting system, this balancer ensures optimal illumination of the rim. This feature aids in rim cleaning and significantly assists in the precise positioning of weights, ensuring a seamless balancing process.



EASYWEIGHT™

Streamlining weight placement, this precision-focused system eliminates guesswork. It employs a laser to precisely indicate the exact location for weight application, ensuring meticulous balancing and accurate results.



POWER CLAMP™

Utilizing advanced electromechanical technology, this balancer incorporates a power clamping device that consistently and reliably secures the wheel with a constant force. This ensures exceptional accuracy and repeatable results every time.

THE ULTIMATE IN PRODUCTIVITY AND PERFORMANCE



SMARTSONAR™

This intelligent system utilizes sonar sensors to automatically detect the rim width, eliminating the need for manual input and reducing the possibility of errors. By streamlining the process, it enhances efficiency and accuracy.



SEMI-AUTOMATIC

Equipped with a user-friendly gauge arm, this system facilitates data entry with easyALU™ assisted rim measurement technology. Technicians simply touch the rim with the gauge arm, and the system automatically enters the rim dimensions and selects the appropriate weight-balancing mode.

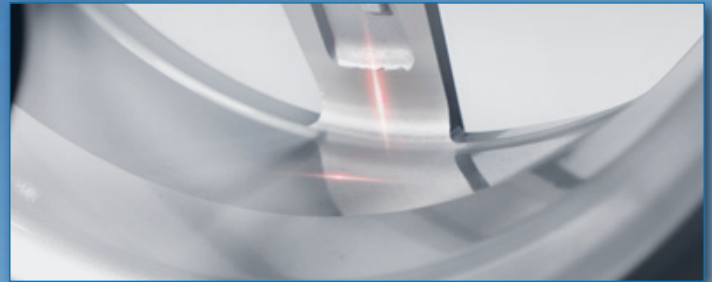


STOP IN POSITION

By simply touching the screen, users can prompt the system to automatically rotate the wheel to the precise position for weight application. This convenient feature streamlines the process and enhances operational efficiency.

geodyna® 7800P

WHEEL BALANCER WITH TOUCHSCREEN MONITOR

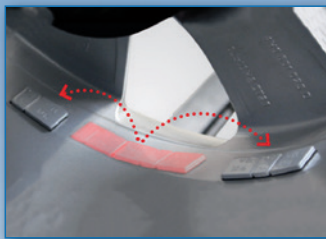


AUTOMATIC DATA ENTRY

Eliminating the need for manual input, this intelligent machine automatically detects wheel dimensions and selects the appropriate balancing mode, weight type, and weight position. This automation accelerates the balancing cycle, reduces operational errors, and enhances efficiency.

AUTOMATIC SPOKE DETECTION

A laser scanner automatically detects the number and position of rim spokes, guiding optimal weight placement behind them for precise balancing with split weights.



SPLIT WEIGHT MODE

This feature ensures accurate balancing and discreet weight concealment behind spokes, maintaining the wheel's aesthetic appeal and visual presentation.

REPORT

Easily generate reports on the local network (additional hardware required) or save as PDFs on a flash drive, facilitating convenient sharing of detailed information with customers for documentation or reference.

EZ-COLLETS MOBILE APP

The EZ-Collets mobile app helps technicians find the right collet, flange plate or speed plate for their job by selecting the vehicle. They can then compare and assess the available tools' benefits.

QUICKBAL™

Engineered for optimal performance, this feature intelligently adjusts the number of revolutions according to each wheel's specifications. Operating at maximum speed, it effectively reduces cycle time, delivering swift and efficient results.

TECHNICAL SPECIFICATIONS

Dimensions HxWxL	72"x34"x52" 183x87x131cm
Power Supply	230V 50-60Hz
Max. Wheel Weight	154 lbs. 70kg
Max. Wheel Diameter	42" 107cm
Max. Rim Width	20" 51cm



FIND A DISTRIBUTOR

<https://hofmann-equipment.com/la-en/distributor>



Snap-on® Total Shop Solutions offers a wide range of garage equipment solutions for workshops, garages, car dealers and fire shops, thanks to the specific solutions provided by its portfolio of premium brands. Hofmann® is a brand of TSS and is committed to product innovation and improvement. Therefore, specifications listed in this sell sheet may change without notice. ©2024 Snap-on Incorporated. Hofmann® is a trademark, registered in the United States and other countries, of Snap-on Incorporated. All rights reserved. All other marks are marks of their respective holders. sswb23037 (LA en) 10/2024

LATIN AMERICA
+1 501 505 2794

HOFMANN®

HOFMANN-EQUIPMENT.COM